



61 Cudworth Street, London, E1

BUTLER & STAG



**Guide Price - £500,000 to £550,000**  
**Introducing a spacious and contemporary residence, this large 3-bedroom apartment offers an expansive living experience, spanning over an impressive 1030 square feet. Nestled in the vibrant vicinity close to Bethnal Green Station, this property combines convenience with modern living.**



## Leasehold

- Three Double Bedrooms
- Close To Bethnal Green Station
- Perfect Buy To Let Investment - 7% Yield
- Communal Terrace
- Over 1030 Sq Feet
- Short Walk To Bricklane
- 15 Minute Walk To Victoria Park
- Great Location

As you step into this generously proportioned apartment, you are greeted by an open and airy atmosphere, accentuated by the abundance of natural light that floods through large windows. The well-designed layout seamlessly integrates the living, dining, and kitchen areas, creating a harmonious flow that enhances the overall sense of space.

The three bedrooms are generously sized, offering versatility for various lifestyles. Each bedroom is a tranquil retreat, providing a comfortable and private space to unwind after a busy day.

Located in proximity to Bethnal Green Station, commuting is a breeze, allowing easy access to the heart of the city and beyond. The surrounding neighborhood boasts an array of amenities, including trendy cafes, diverse dining options, and recreational spaces, ensuring a lifestyle that seamlessly blends urban convenience with local charm.

This residence is not just a home; it's an invitation to a lifestyle of comfort and sophistication. With its spacious interiors, modern design, and convenient location, this large 3-bedroom apartment near Bethnal Green Station presents an exceptional opportunity for those seeking a harmonious blend of style and practicality in the heart of the city.

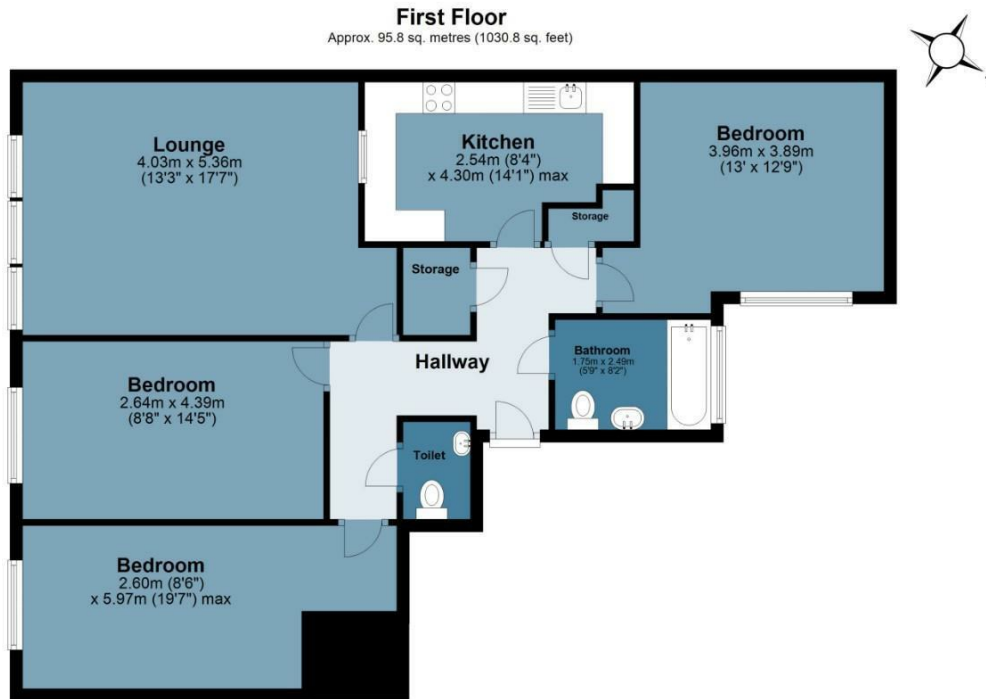




## Bookbinders Court

Approx. Gross Internal Area 95.8 Sq M ( 1030.8 Sq Ft )

**BUTLER & STAG**



Measurements are approximate and for illustration purposes only. While we do not doubt the accuracy and completeness, we advise you conduct a careful independent assessment of the property to determine monetary value.  
© @modephotouk www.modephoto.co.uk

**BUTLER & STAG**

☎ 020 8102 1236

🏠 508 Roman Road, Bow, London, E3 5LU

✉ bow@butlerandstag.com

[www.butlerandstag.uk](http://www.butlerandstag.uk)

IMPORTANT NOTICE - These particulars have been prepared in good faith and they are not intended to constitute part of an offer or contract. We have not performed a structural survey on this property and the services, appliances and specific fittings have not been tested. All photographs, measurements, floor plans and distances referred to are given as a guide and should not be relied upon.